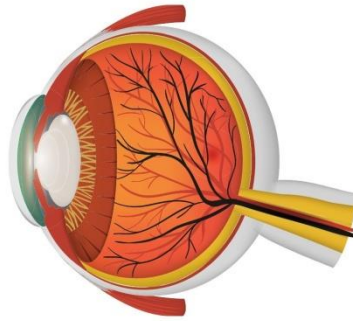


SAFETY ISSUES

12.1. Vocabulary

Ex. 1. Look at the pictures below and write the names.

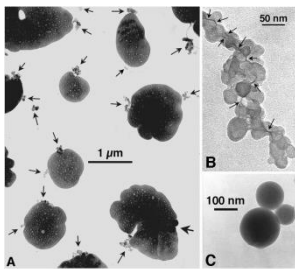


1) _____

2) _____

3) _____

(2 words)



4) _____

5) _____

6) _____

2. Solve the crossword puzzle.

Across

[3] the fact of experiencing something or being affected by
it because of being in a particular situation or place

[4] special clothing or equipment that you use to protect
yourself during a particular task

[6] the area at the back of the eye that receives light and

sends pictures of what the eye sees to the brain

[8] a red, painful, and often swollen area in or on a part of your body

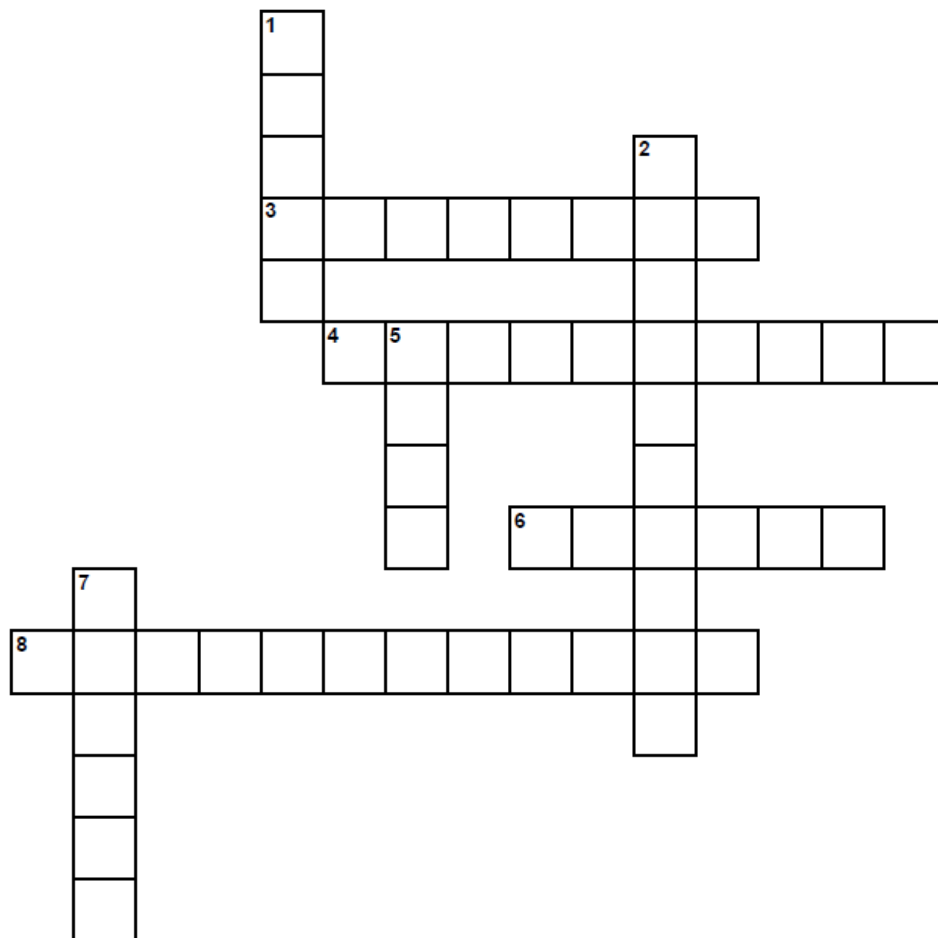
Down

[1] strong, unpleasant, and sometimes dangerous gas or smoke

[2] an action that is done to prevent something unpleasant
or dangerous happening

[5] the possibility of something bad happening

[7] physical harm or damage to someone's body caused by
an accident or an attack



Ex. 3. Complete the sentences with the given words:

protection, explosion risk, precautions, Exposure to extreme heat, cornea, risk of injury, particulate matter

Before starting welding, it's important to take necessary _____(1) against potential hazards.

Welders are trained to minimize the _____(2) by wearing proper safety gear.

The intense heat from welding can damage the _____(3) if eye protection is not worn.

When welding metal, it's crucial to protect your lungs from harmful _____(4).

_____ (5) during welding can cause serious burns if protective clothing is not worn.

Welding professionals always make sure to wear adequate _____(6) to prevent accidents.

Welding operations carry an inherent _____(7) that must be managed with proper training.

12. 2. Reading

Ex. 1. Read the text.

Precautions to be taken during welding

Welding is a process that joins two pieces of metal by melting them together. It can be dangerous, so it's important to take precautions.

First, always wear the right protective gear. This includes a welding mask or helmet with a dark visor to protect your eyes from the bright light, and gloves made of thick leather to protect your hands from sparks and burns. You should also wear long-sleeved clothing and boots to protect the rest of your body.

Second, make sure you are in a well-ventilated area. Welding produces fumes that can be harmful if inhaled, so it's important to work in a space

with good airflow. If you are working indoors, open windows and doors, and use fans to help circulate the air. If you are working outdoors, position yourself so that the wind is blowing the fumes away from you.

Third, be aware of fire hazards. Welding creates sparks and can cause nearby flammable materials to catch fire. Before you start welding, clear the area of any flammable objects, such as paper, fabric, and gasoline. If you are working near a wall or ceiling, cover it with a fire-resistant material, such as a welding blanket, to prevent sparks from igniting it.

Fourth, be mindful of electrical safety. Welding requires the use of an electric arc, which can pose a risk of electric shock. Make sure your welding machine is properly grounded and that all cables and connections are in good condition. Avoid touching the electrode or the metal being welded when the machine is on. If you need to move the welding machine, turn it off and unplug it first.

Finally, practice good technique. Proper welding technique not only produces better results, but also reduces the risk of accidents. Take the time to learn and master the correct way to hold the welding torch, position your body, and control the arc. Always follow the instructions and guidelines provided by the manufacturer of your welding equipment.

By following these precautions, you can ensure that your welding work is done safely and effectively.

Ex. 2. Answer the questions.

1. What is welding and how does it join two pieces of metal?
2. Why is it important to wear protective gear while welding?
3. How can you ensure good ventilation while welding?
4. What are some fire hazards to be aware of when welding?
5. Why is electrical safety important during welding?
6. How can practicing good technique reduce the risk of accidents while welding?

7. What steps should be taken before moving the welding machine?

12.3. Communication

Ex. 1. Make sentences using the following words:

1. protective/goggles/welding
2. heat-resistant/gloves/safety
3. fire/extinguisher/nearby
4. connections/starting/weld
5. ventilation/procedures/avoid
6. welding/helmet/protect
7. work/area/clean
8. surroundings/all/times
9. equipment/signs/damage
10. handling/hot/materials/burns

Ex. 2. Make questions using the following words:

1. wear/proper/protective
2. aware/fire/hazards
3. precautions/take/starting
4. received/training/safety
5. follow/recommended/guidelines
6. identify/potential/safety
7. ensure/proper/ventilation
8. familiar/emergency/procedures
9. check/equipment/regularly
10. read/safety/manual